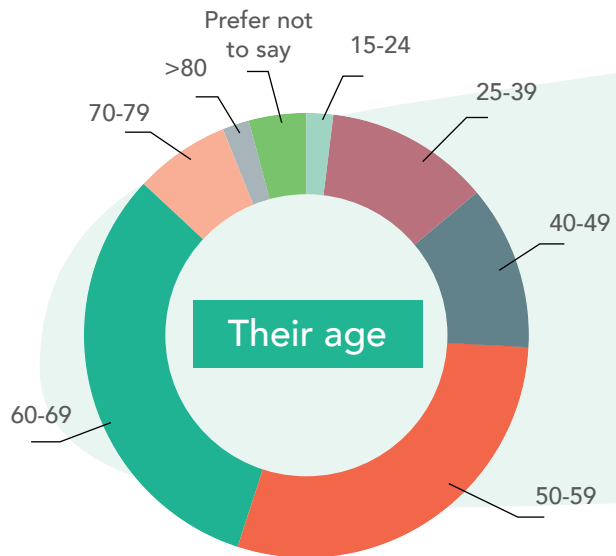
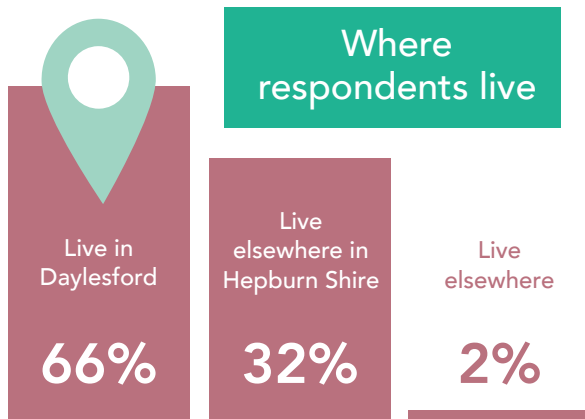
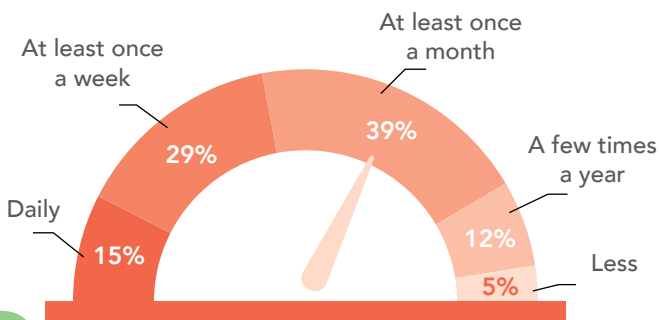


WHAT WE HEARD: Central Springs Reserve Feedback

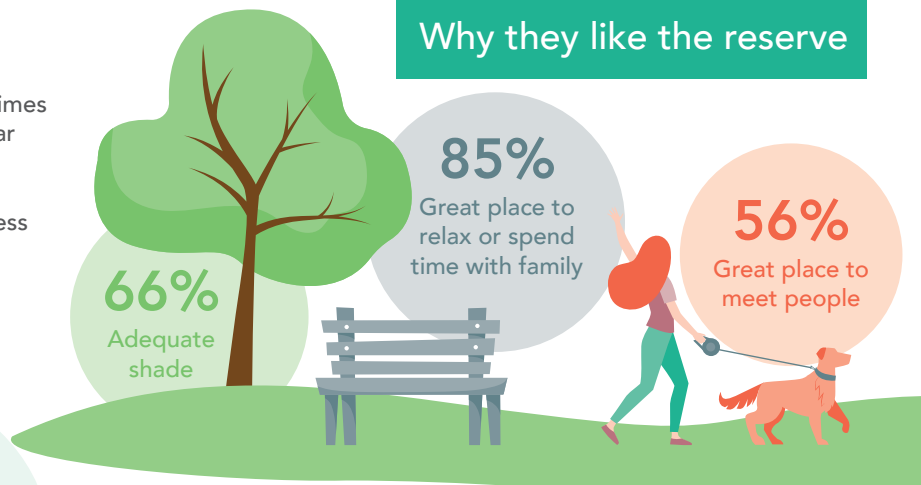
We invited community members to give us feedback on Central Springs Reserve in March and April 2021. This feedback will help us to revitalise the area. Here's what we heard from 40 respondents:



How often they visit the reserve



Why they like the reserve



Best attributes

- Shade trees
- Operational mineral springs
- Grassed open space
- Access to shelter

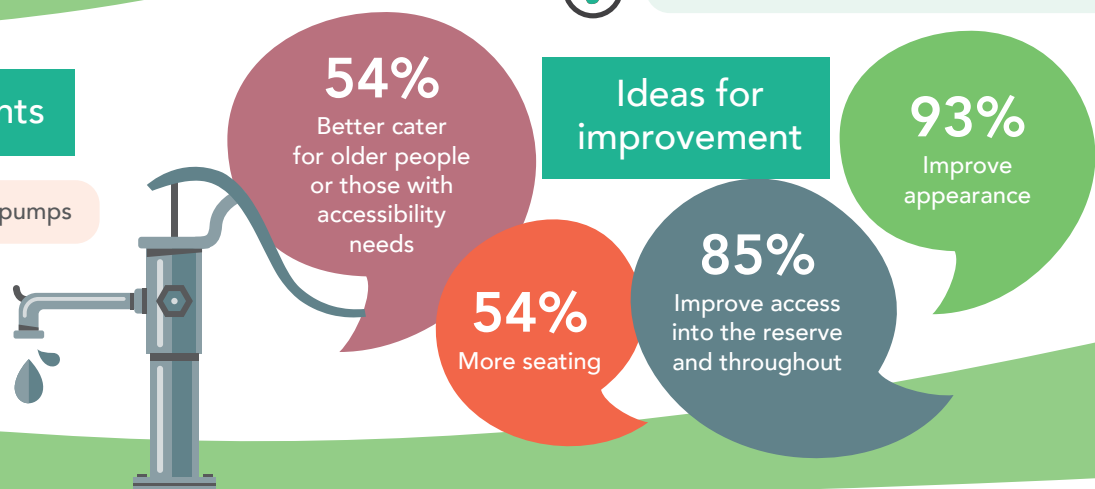
Why they visit the reserve

- Solo relaxation/ reflection
- Socialising with family / friends
- Exercise

Improve these elements

- Appearance of the mineral spring pumps
- Shelter
- Park furniture
- Tree planting and vegetation

Ideas for improvement



We're working to incorporate this feedback into a draft masterplan to guide improvements at the reserve. The draft plan will open for community input in mid-July. Find out more at <https://participate.hepburn.vic.gov.au>.